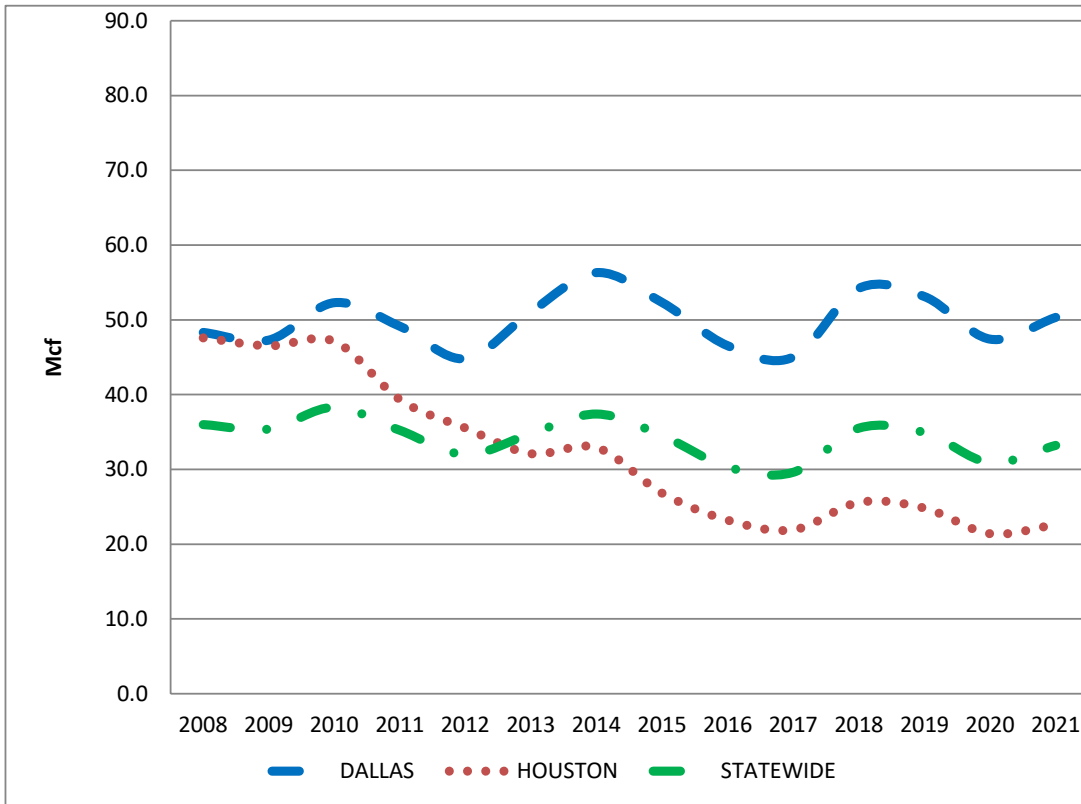


RAILROAD COMMISSION OF TEXAS
 GAS SERVICES
 AVERAGE MONTHLY GAS CONSUMPTION (Mcf)
 PER COMMERCIAL CUSTOMER



<u>YEAR</u>	<u>DALLAS</u>	<u>HOUSTON</u>	<u>STATEWIDE</u>
2008	48.3	47.6	36.0
2009	47.3	46.5	35.4
2010	52.3	47.1	38.3
2011	49.1	39.3	35.2
2012	44.8	35.5	32.0
2013	51.1	32.1	34.8
2014	56.3	32.9	37.4
2015	52.3	26.8	34.5
2016	46.5	23.2	30.3
2017	45.0	21.9	29.6
2018	54.2	25.6	35.5
2019	53.1	24.8	34.9
2020	47.4	21.4	30.9
2021	50.3	22.6	33.2

SOURCE: COMPANY ANNUAL REPORTS